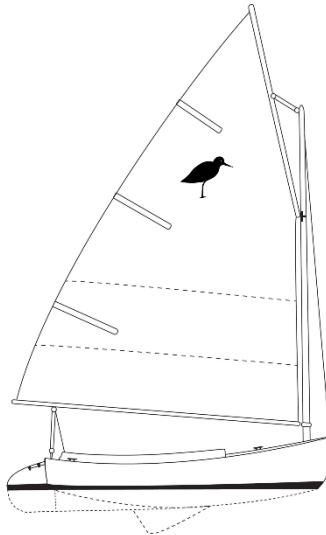


Sandpiper National Championship Regatta

September 21 – 23, 2017



SAILING INSTRUCTIONS

1. RULES

The regatta will be governed by the rules as defined in the 2017-2020 Racing Rules of Sailing (RRS), the prescriptions of US SAILING, and the rules of the Sandpiper Class Association.

2. NOTICES TO COMPETITORS

Notices to competitors will be posted on the official notice board located at the Duxbury Yacht Club on the south side of the clubhouse across from the flagpole.

3. CHANGES TO SAILING INSTRUCTIONS

Any change to the sailing instructions will be posted before 0900 on the day it will take effect.

4. SIGNALS MADE ASHORE

4.1. Signals made ashore will be displayed from the flagpole yardarm at the Duxbury Yacht Club waterfront.

4.2. Flag "AP" with two sounds (one when lowered) indicates the race is postponed. The warning signal will be made not less than 1/2 hour after AP is lowered.

4.3. Flag "B" hoisted with one sound indicates "Protest Time Has Begun". When lowered halfway, it indicates "There are less than 30 minutes of protest time remaining". When lowered, it indicates "Protest time has ended".

5. SCHEDULE OF RACES

5.1. There will be a competitors' meeting on Thursday, September 21st at 0900 at the Duxbury Yacht Club. The scheduled races are as follows:

Date	Day	Event	High Tide	Harbor Start	First Warning
Sept 21	Thur	Sandpiper Nationals Day1 Racing	1249	1100	1200
Sept 22	Fri	Sandpiper Nationals Day 2 Racing	1330	1130	1230
Sept 23	Sat	Sandpiper Nationals Day 3 Racing	1421	1200	1300

5.2. The Race Committee will endeavor to run as many races as possible based on weather and tide conditions each day. The Race Committee may change the schedule of races to accommodate the wind conditions.

5.3. The scheduled time of the warning signal for the first race each day will be the times indicated in **Section 5.1** above. Subsequent races each day will be held as soon as possible after the end of the previous race. There will be a short break between the second and third races each day for a snack/refreshments on the water.

5.4. To alert boats of an impending starting sequence, a series of no less than 5 brief sounds will be made at 15 seconds before the warning signal.

5.5. No warning signal will be made after 1600 on each day of the regatta.

6. CLASS FLAGS

The RC vessel will display a white flag with a black Sandpiper silhouette class logo upon it with a single sound at the Warning for each race. The class flag will be lowered at the start of each race.

7. RACING AREA

The racing area will be located outside of the basin area of Snug Harbor towards the northern part of Duxbury Bay – as wind conditions warrant and inform. Attachment "A" shows the approximate location of the racing area.

8. THE COURSES

8.1 The courses will be Windward-Leeward (W), or Triangle (T) , with all marks rounded to port. The number '2' following a course indicates a twice around course. Attachment "B" details the courses to be used for racing.

8.2 The course will be displayed on the yardarm staff of the RC vessel no later than the Warning Signal for that race.

8.3 An offset mark may be employed at the weather mark for Windward-Leeward (W) courses. Boats shall round the offset mark to port after rounding the mark.

9 MARKS

- 9.1** The turning marks of the course will be Yellow buoy/marks.
- 9.2** The offset mark, when used, will be a smaller yellow ball.
- 9.3** To protect the RC vessel, a red ball will drift astern of her transom and will be considered a mark that must be honored for racing purposes.
- 9.4** The starting and finishing mark will be an orange flagged bouy set perpendicular to the committee boat.
- 9.5** A missing mark will be replaced by a red ball mark or a mark boat displaying an 'M' flag.
- 9.6** Leeward gate marks may be employed at the discretion of the Race Committee. Gate marks will be yellow buoys.

10 THE START

- 10.1** Races will be started using RRS 26.
- 10.2** The starting line will be between a staff displaying a white flag on the RC vessel and the course side of the starting mark.
- 10.3** The race committee may attempt to hail and broadcast sail numbers of boats that are OCS on VHF radio. Failure to hail or broadcast any sail numbers, failure of a boat to receive the recall hail or broadcast, a boat's position in the sequence of the hail or broadcast, promptness of the hail or broadcast shall not be grounds for redress. This changes RRS 29.2 and RRS 62.1(a).

11 CHANGE OF THE NEXT LEG OF THE COURSE

- 11.1** To change the next leg of the course, the race committee will move the original mark (or the finishing line) to a new position.

12 THE FINISH

- 12.1** The finish line will be between a race committee or patrol boat flying an orange flag and the course side of the finishing mark.
- 12.2** Boats that have finished shall stay clear of the finishing area.

13 PENALTY SYSTEM

The penalty for fouling another competitor will be one turn, including one tack and one jibe. This changes RRS 44.2.

14 TIME LIMIT

- 14.1** The time limit for all races will be 90 minutes.
- 14.2** Boats failing to finish within 30 minutes after the first boat sails the course and 3 finishes will be scored Did Not Finish without a hearing. This changes rules 35, A4 and A5.

15 PROTESTS AND REQUESTS FOR REDRESS

- 15.1** A boat intending to file a protest shall notify the Race Committee before leaving the course area or if that is impossible immediately after arriving ashore.
- 15.2** The protest time limit is one hour after the Committee Boat docks at Duxbury

Yacht Club. Protests are to be submitted to the jury located in the main clubhouse of the Duxbury Yacht Club.

- 15.3** Notices will be posted no later than 30 minutes after the protest time limit to inform competitors of hearings in which they are parties or named as witnesses. Hearings will be held in the DYC clubhouse by the fireplace beginning at the time posted.

16 SCORING

16.1 One race is required to be completed to constitute a series.

16.2 If 5 or more races are sailed, a boat's worst score shall be discarded

17 SAFETY REGULATIONS

17.1 All boats must complete a Required Equipment check at registration in which they will be required to show proof of each item on a Required Equipment list.

17.2 A boat that retires from a race shall notify the race committee as soon as possible.

18 EQUIPMENT AND MEASUREMENT CHECKS

18.1 All boats shall carry the safety equipment required by the Sandpiper Class Association Rules and these sailing instructions.

18.2 Boats are subject to inspection for all safety equipment including, but not limited to, towline of at least 30', bilge pump, bucket, paddle, suitable anchor and anchor line, whistle, life vests for each crewmember, and a VHF radio. Boats must conform to all the requirements of the Sandpiper Class Association Rules. A failed inspection will be a DSQ.

19 RADIO COMMUNICATION

19.1 VHF radio channel 7 to be used for communication of race information and emergencies.

19.2 Except in an emergency, a boat shall neither make radio transmissions while racing nor receive radio communications not available to all boats. This restriction also applies to mobile telephones.

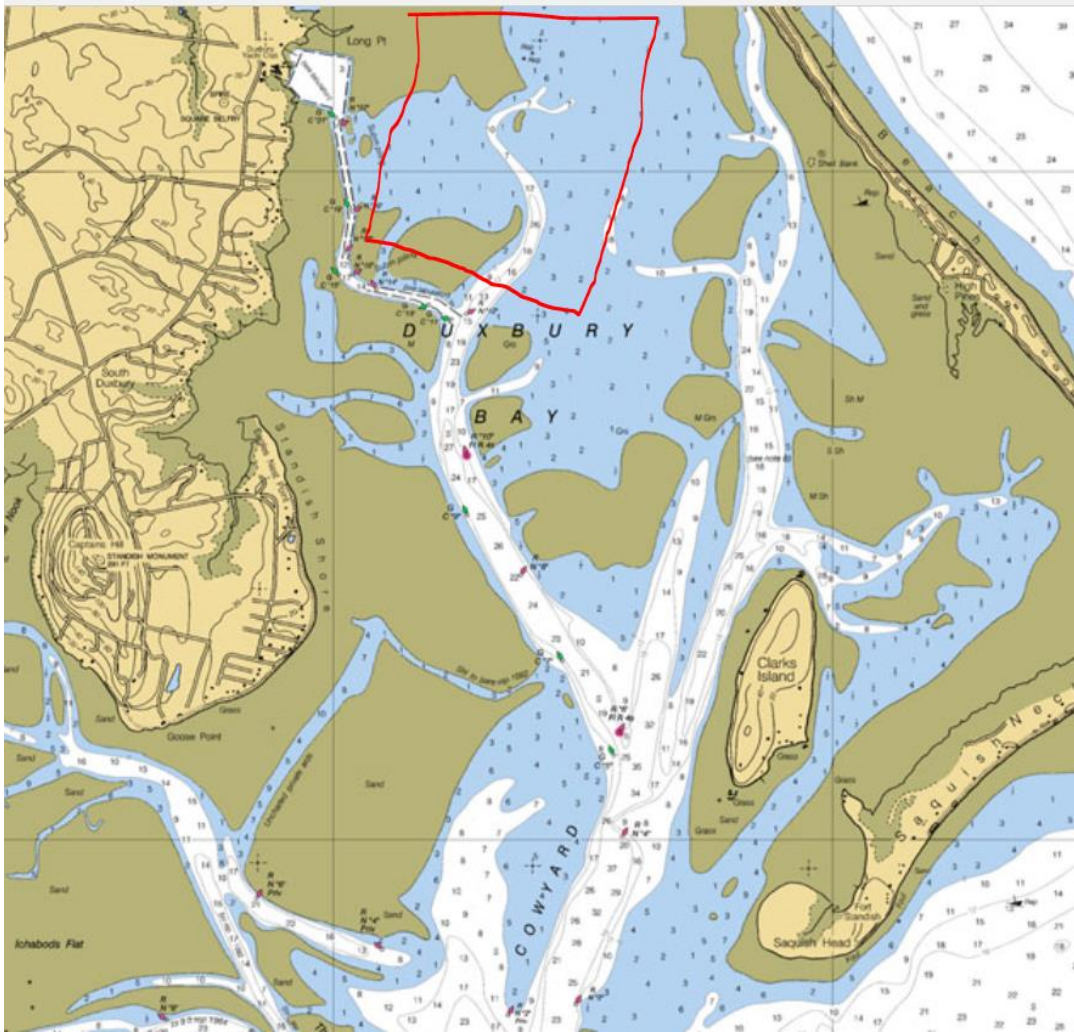
20 PRIZES

Prizes will be awarded to competitors placing first through third. The Sandpiper National Championship perpetual trophy will be presented to the winner of the regatta.

21 DISCLAIMER OF LIABILITY

Competitors participate in the regatta entirely at their own risk. See RRS 4, Decision to Race. The organizing authority will not accept any liability for material damage or personal injury or death sustained in conjunction with or prior to, during, or after the regatta.

Attachment A



(Racing Area)

Appendix B
(Race Courses)

